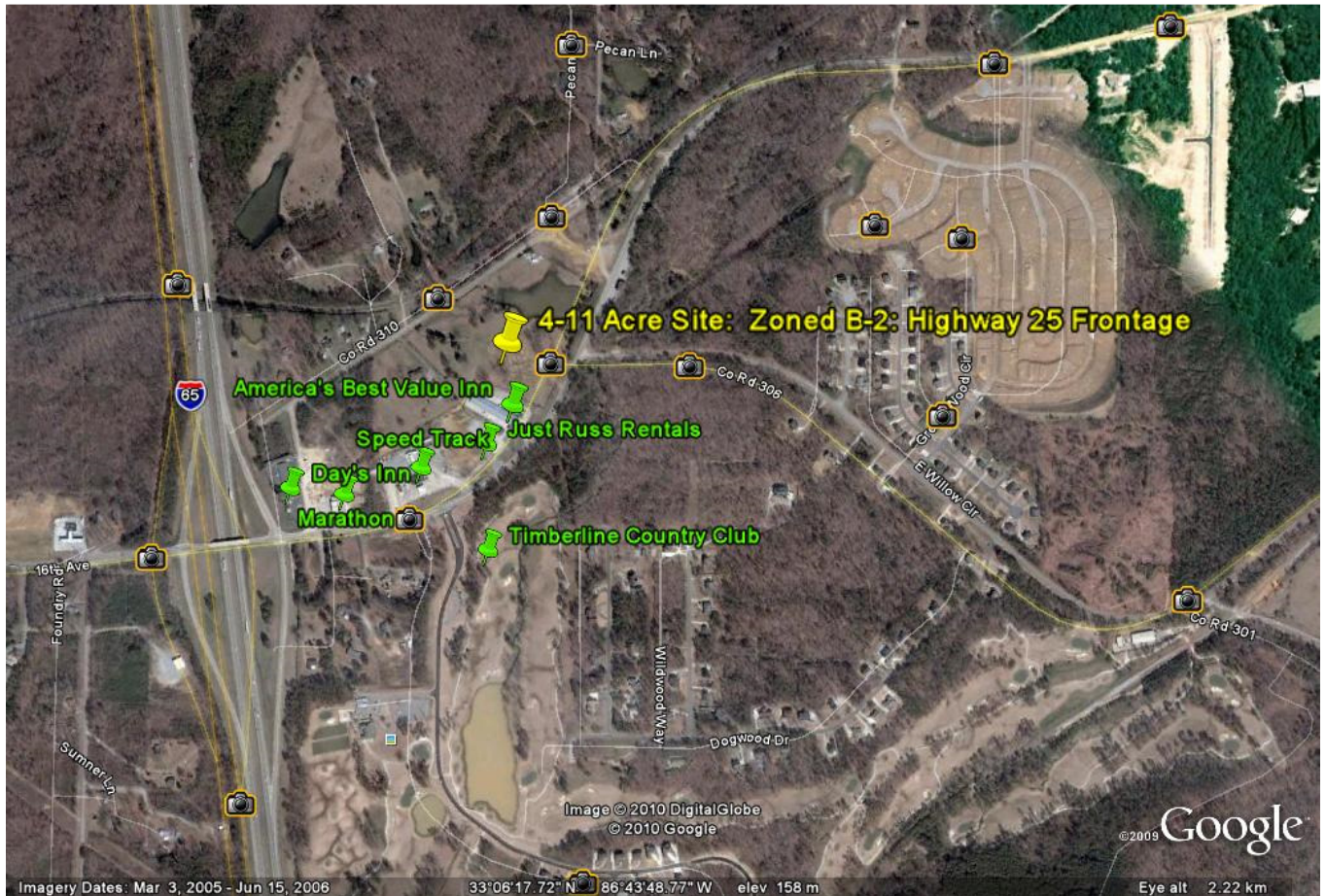


# FOR SALE COMMERCIAL LAND HWY 25, CALERA 4-11 +/- ACRES



**RealtySouth**<sup>TM</sup>  
COMMERCIAL SALES & LEASING

**Debbie Seale, CCIM**

**Direct Line: 205-620-2712**

**Fax: 205-877-6095**

**E-mail: [dseale@realtysouth.com](mailto:dseale@realtysouth.com)**

All information herein from sources deemed reliable; however, purchaser should verify all information. RealtySouth and or it's agents are not responsible for any errors and/or omissions, change of price or terms, prior sale or lease, or withdrawal without notice

# **FOR SALE**

## **COMMERCIAL LAND**

### **4-11 acres +/-**

*Hwy 25  
Calera, Al 35040*

*Sales Price: \$79,000/acre*

*P.I.D. 28-5-22-0-000-005.001*

*Zoned: B-2*

*Utilities: All available, including sewer*

*Special Features:*

- **Road Frontage on Hwy 25**
- **Adjacent to Motel**
- **Easy interstate access**

*Directions:* Take I-65 south to Calera Exit 228. Make a left onto Hwy 25. Go approximately .4 miles and look for property on the left.

---

**RealtySouth**<sup>TM</sup>  
COMMERCIAL SALES & LEASING

***Debbie Seale, CCIM***

***Direct Line: 205-620-2712***

***Fax: 205-877-6095***

***E-mail: [dseale@realtysouth.com](mailto:dseale@realtysouth.com)***

---

**All information herein from sources deemed reliable; however, purchaser should verify all information. RealtySouth and or it's agents are not responsible for any errors and/or omissions, change of price or terms, prior sale or lease, or withdrawal without notice.**